

Алматы (727)345-47-04
 Ангарск (3955)60-70-56
 Архангельск (8182)63-90-72
 Астрахань (8512)99-46-04
 Барнаул (3852)73-04-60
 Белгород (4722)40-23-64
 Благовещенск (4162)22-76-07
 Брянск (4832)59-03-52
 Владивосток (423)249-28-31
 Владикавказ (8672)28-90-48
 Владимир (4922)49-43-18
 Волгоград (844)278-03-48
 Вологда (8172)26-41-59
 Воронеж (473)204-51-73
 Екатеринбург (343)384-55-89

Иваново (4932)77-34-06
 Ижевск (3412)26-03-58
 Иркутск (395)279-98-46
 Казань (843)206-01-48
 Калининград (4012)72-03-81
 Калуга (4842)92-23-67
 Кемерово (3842)65-04-62
 Киров (8332)68-02-04
 Коломна (4966)23-41-49
 Кострома (4942)77-07-48
 Краснодар (861)203-40-90
 Красноярск (391)204-63-61
 Курск (4712)77-13-04
 Курган (3522)50-90-47
 Липецк (4742)52-20-81

Магнитогорск (3519)55-03-13
 Москва (495)268-04-70
 Мурманск (8152)59-64-93
 Набережные Челны (8552)20-53-41
 Нижний Новгород (831)429-08-12
 Новокузнецк (3843)20-46-81
 Ноябрьск (3496)41-32-12
 Новосибирск (383)227-86-73
 Омск (3812)21-46-40
 Орел (4862)44-53-42
 Оренбург (3532)37-68-04
 Пенза (8412)22-31-16
 Петрозаводск (8142)55-98-37
 Псков (8112)59-10-37
 Пермь (342)205-81-47

Ростов-на-Дону (863)308-18-15
 Рязань (4912)46-61-64
 Самара (846)206-03-16
 Санкт-Петербург (812)309-46-40
 Саранск (8342)22-96-24
 Саратов (845)249-38-78
 Севастополь (8692)22-31-93
 Симферополь (3652)67-13-56
 Смоленск (4812)29-41-54
 Сочи (862)225-72-31
 Ставрополь (8652)20-65-13
 Сургут (3462)77-98-35
 Сыктывкар (8212)25-95-17
 Тамбов (4752)50-40-97
 Тверь (4822)63-31-35

Тольятти (8482)63-91-07
 Томск (3822)98-41-53
 Тула (4872)33-79-87
 Тюмень (3452)66-21-18
 Улан-Удэ (3012)59-97-51
 Ульяновск (8422)24-23-59
 Уфа (347)229-48-12
 Хабаровск (4212)92-98-04
 Чебоксары (8352)28-53-07
 Челябинск (351)202-03-61
 Череповец (8202)49-02-64
 Чита (3022)38-34-83
 Якутск (4112)23-90-97
 Ярославль (4852)69-52-93

Россия +7(495)268-04-70

Казахстан +7(727)345-47-04

Беларусь +(375)257-127-884

Узбекистан +998(71)205-18-59

Киргизия +996(312)96-26-47

<https://polyscience.nt-rt.ru> || pec@nt-rt.ru



GENERAL PURPOSE WATER BATHS

POLYSCIENCE WATER BATHS ARE A SLEEK, CLEANLY DESIGNED ADDITION TO YOUR BENCH, OFFERING ABSOLUTE CONTROL, PRECISION AND CONVENIENCE

General Purpose Water Baths

The general purpose water bath is a fundamental product in the lab. Many manufacturers often sacrifice quality and innovation strictly to meet the demands of a tight budget. PolyScience believes you can have both, as well as convenience, durability and safety.



2 Liter General Purpose Water Bath



5 Liter General Purpose Water Bath



10 Liter General Purpose Water Bath



20 Liter General Purpose Water Bath



28 Liter General Purpose Water Bath

General Water Baths

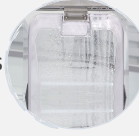
REAR-MOUNTED DRAIN

Reservoir drain only on 10 liter and larger baths



RESERVOIR

Clear, hinged cover tilts out of the way, lets condensation drain back into the bath, prevents puddles on your bench.



PROGRAMMABLE PRESETS

Programmable presets save programs that control both time and temperature settings of your frequently used needs.




**Five
Language
Settings**

HIGH-GABLED LID

High-gabled lid accommodates taller media bottles and provides easy clearance when opening and closing.

FULL-COLOR TFT LCD DISPLAY

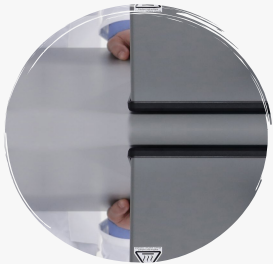
Full-color TFT LCD display features high contrast and excellent clarity allowing for easy viewing, even from across the room.

DIGITAL CONTROL PANEL

Features large square buttons for easy access and navigation of the intuitive interface.

Feature Details

Our goal with our water baths has always been is to strike a perfect balance between cost and reliable precise temperature control. Something we have once again achieved with our new generation of PolyScience water baths.



Clear Hinged Gable Cover

Tilting, see-through Reservoir Cover

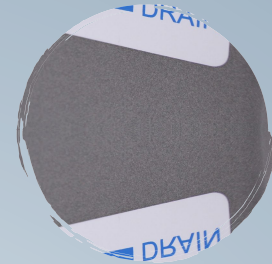
- Standard feature on all of our water baths
- When you tilt the lid back, condensation drains down into the bath.
- High-clearance lid design accommodates taller media bottles so you can temper your samples with the cover closed and achieve improved control and uniformity.
- Since the cover is clear, you can see your samples at any time without having to lift the lid and disturb your work.



Reservoir

Prevents puddles on your bench

When you tilt the Hinged Gable Cover back, condensation drains down into the bath.



Drain

Rear-Mounted Drain

Available on 10 Liter or larger Water Baths.

Feature Details Continued

Our goal with our water baths has always been to strike a perfect balance between cost and reliable precise temperature control. Something we have once again achieved with our new generation of PolyScience water baths.

TFT Display

Full-color TFT Display

PolyScience water baths are the first baths on the market to utilize a full color TFT display.

- User-settable High Limit Value
- User-settable alarms: audible, visible or both
- Displays actual and set point temperature simultaneously
- Programmable pre-sets for frequently used temperatures
- At the end of any preset, the bath will automatically enter Eco Mode, for low energy no-heat operation. Added safety and energy savings.
- Integrated timer
- Calibration off-set feature
- Primary and automatic safety thermostats
- Interface offers five selectable languages: English, French, German, Spanish or Chinese



Silicone-pad

Heating Element

The silicone-pad heating element was specifically designed to apply even heating throughout the entire bottom surface of the tank, creating excellent temperature uniformity.



Handles

Handles for easy positioning

Recessed handles enable easy positioning and minimize the footprint to allow space for additional equipment on lab work surfaces.



General Purpose Water Baths Specifications

Research, communication and listening to our customers needs are what drives the innovation to make the new PolyScience line of water baths stand out from the competition. These new intelligent water baths are the perfect blend of control, convenience, safety and of course budget.

Capacity	2 Liter	5 Liter	10 Liter	20 Liter	28 Liter
Temperature Range	Ambient+5° to 100°C	Ambient+5° to 100°C	Ambient+5° to 100°C	Ambient+5° to 100°C	Ambient+5° to 100°C
Temperature Stability	±0.1°C	±0.1°C	±0.1°C	±0.1°C	±0.1°C
Working Access (L x W x D)	3.9 x 4.3 x 6 in 9.9 x 10.9 x 15.2 cm	5 x 10.8 x 6 in 12.7 x 27.4 x 15.2 cm	10.6 x 11.6 x 6 in 26.9 x 29.5 x 15.2 cm	9.5 x 17 x 6 in 24.1 x 43.2 x 15.2 cm	9.5 x 17 x 8 in 24.1 x 43.2 x 20.3 cm
Overall Dimensions (L x W x H)	8.8 x 8.5 x 13.1 in 22.2 x 21.6 x 33.3 cm	9.3 x 14.4 x 13.1 in 23.5 x 36.5 x 33.3 cm	16.3 x 14.4 x 15.0 in 41.3 x 36.5 x 38.1 cm	15.1 x 22.5 x 15.1 in 38.4 x 57.2 x 38.4 cm	15.1 x 22.5 x 17.0 in 38.4 x 57.2 x 43.2 cm
Heater Wattage	120 W	360 W	1000 W	1400 W	1400 W
Programmable Timer	•	•	•	•	•
Hinged Gable Cover	•	•	•	•	•
Programmable High Limit	•	•	•	•	•
Over-Temperature Protection	Non-adjustable / Auto Reset	Non-adjustable / Auto Reset	Non-adjustable / Auto Reset	Non-adjustable / Auto Reset	Non-adjustable / Auto Reset
Programmable Calibration/ Temperature Offset	•	•	•	•	•
5 Programmable Preset Temperatures	•	•	•	•	•
Audible and Visual Alarms	•	•	•	•	•
Control Panel Lock	•	•	•	•	•
Eco Mode	•	•	•	•	•
Model	WBE02	WBE05	WBE10	WBE20	WBE28



Optional Accessories

At PolyScience, we believe strongly in providing the very best products and the highest level of service to our customers. While we have tried to provide adequate products and accessories that can assist you..



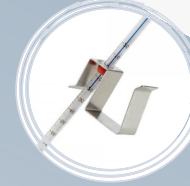
Test Tube Racks

Keep your samples in place with these Stainless Steel Test Tube Racks.



Floating Ball Cover

Covers top of any open tank. Reduces fumes, splashing hazard and heat loss by 75% and evaporation by 87%. Usable to 95°C.



Thermometer/Holder

-20° to +150°C Thermometer. Alcohol. Non-calibrated. Can purchase holder to go with Thermometer.



Polyclean clarifier

Prevents growth of algae, keeps reservoirs clean and odor-free. Concentrated: 8 oz (237 ml) treats approximately 200 gallons (757 liters) Can order in bottle or case.



Polytherm PAG 140

Polytherm PAG140 offers excellent properties for mid-range temperature baths and circulation systems. Polyalkylene glycol is a low-cost alternative to silicone fluids. Ideal for use in stainless steel and polycarbonate tanks.



Polyclear MIX 30 Plus

General purpose fluid for routine applications above 15°C, prevents algae growth and premature rust formation.

Quality, Reliability, Durability & Ease of Use

Research, communication and listening to our customers needs are what drives the innovation to make the new PolyScience line of water baths stand out from the competition. These intelligent water baths are the perfect blend of control, convenience, safety and of course budget.



50 years of research and innovation have come together to offer you the best water bath with the greatest ease of use on the market.

Glossary of Terms

At PolyScience, we believe strongly in providing the very best products and the highest level of service to our customers. While we have tried to provide adequate product descriptions, we realize that some customers may be interested in more in-depth information than that listed.



General Purpose Water Bath

A vessel that can be held at a desired temperature via an integral heater and temperature controller. A General Purpose Water Bath does not incorporate a mechanical means of fluid circulation.



Temperature Range

This is the temperature range that the equipment is capable of achieving and may be broader than the Working Temperature Range. This extended temperature range is particularly useful for the cooling of devices — such as lasers — that must be brought up to a temperature above ambient before operation can begin.



Temperature Stability

This represents how precisely an instrument maintains a set-point temperature and is expressed as a plus/ minus value. For example, the actual bath temperature in a circulating bath with a set-point of 23.20°C and a temperature stability of $\pm 0.01^\circ\text{C}$ may vary from 23.19°C to 23.21°C.



Working Access/Bath Opening

This dimension provides information on the amount of available space within the Water Bath for glassware, sample holders, test tube racks, etc.



ECO Mode

At the conclusion of any preset, the bath will automatically enter Eco Mode, for low energy no-heat operation. Added safety and energy savings.

Алматы (727)345-47-04
Ангарск (3955)60-70-56
Архангельск (8182)63-90-72
Астрахань (8512)99-46-04
Барнаул (3852)73-04-60
Белгород (4722)40-23-64
Благовещенск (4162)22-76-07
Брянск (4832)59-03-52
Владивосток (423)249-28-31
Владикавказ (8672)28-90-48
Владимир (4922)49-43-18
Волгоград (844)278-03-48
Вологда (8172)26-41-59
Воронеж (473)204-51-73
Екатеринбург (343)384-55-89

Иваново (4932)77-34-06
Ижевск (3412)26-03-58
Иркутск (395)279-98-46
Казань (843)206-01-48
Калининград (4012)72-03-81
Калуга (4842)92-23-67
Кемерово (3842)65-04-62
Киров (8332)68-02-04
Коломна (4966)23-41-49
Кострома (4942)77-07-48
Краснодар (861)203-40-90
Красноярск (391)204-63-61
Курск (4712)77-13-04
Курган (3522)50-90-47
Липецк (4742)52-20-81

Магнитогорск (3519)55-03-13
Москва (495)268-04-70
Мурманск (8152)59-64-93
Набережные Челны (8552)20-53-41
Нижний Новгород (831)429-08-12
Новокузнецк (3843)20-46-81
Новый Уренгой (3496)41-32-12
Новосибирск (383)227-86-73
Омск (3812)21-46-40
Орел (4862)44-53-42
Оренбург (3532)37-68-04
Пенза (8412)22-31-16
Петрозаводск (8142)55-98-37
Псков (8112)59-10-37
Пермь (342)205-81-47

Ростов-на-Дону (863)308-18-15
Рязань (4912)46-61-64
Самара (846)206-03-16
Санкт-Петербург (812)309-46-40
Саранск (8342)22-96-24
Саратов (845)249-38-78
Севастополь (8692)22-31-93
Симферополь (3652)67-13-56
Смоленск (4812)29-41-54
Сочи (862)225-72-31
Ставрополь (8652)20-65-13
Сургут (3462)77-98-35
Сыктывкар (8212)25-95-17
Тамбов (4752)50-40-97
Тверь (4822)63-31-35

Тольятти (8482)63-91-07
Томск (3822)98-41-53
Тула (4872)33-79-87
Тюмень (3452)66-21-18
Улан-Удэ (3012)59-97-51
Ульяновск (8422)24-23-59
Уфа (347)229-48-12
Хабаровск (4212)92-98-04
Чебоксары (8352)28-53-07
Челябинск (351)202-03-61
Череповец (8202)49-02-64
Чита (3022)38-34-83
Якутск (4112)23-90-97
Ярославль (4852)69-52-93

Россия +7(495)268-04-70

Казахстан +7(727)345-47-04

Беларусь +3(75)257-127-884

Узбекистан +998(71)205-18-59

Киргизия +996(312)96-26-47